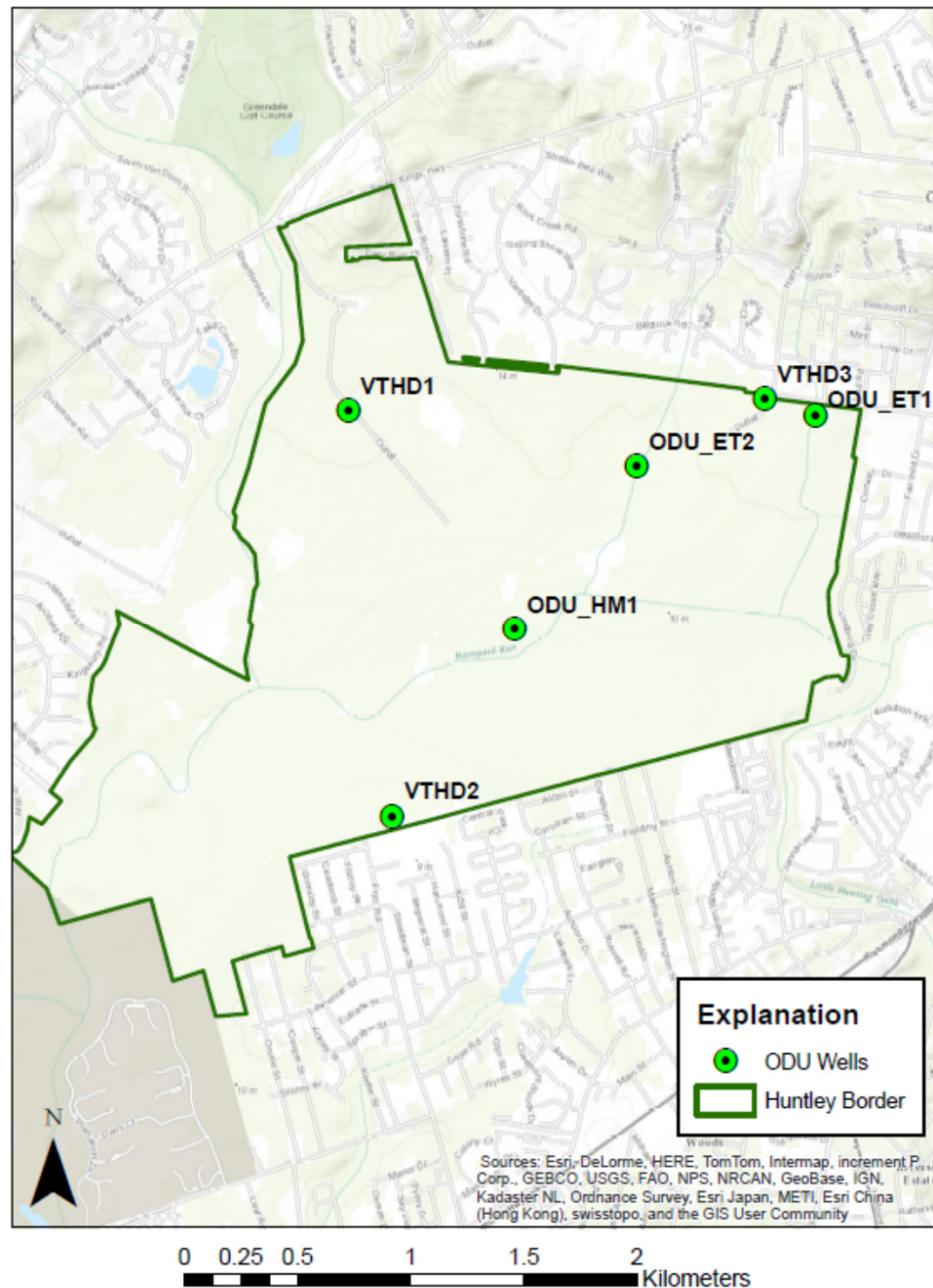


ODU Monitoring Array at Huntley Meadows as of Dec. 2014



Map of groundwater wells monitored by Old Dominion University (ODU) and Virginia Tech. These wells are used primarily to monitor fluctuations in deeper groundwater resources that underlie the park to help determine the relationship of surface water fluctuations in the wetland to regional flow patterns.

Two of these wells (ET1 and ET2) are also instrumented to assist in determination of evapotranspiration (ET) rates for associated water budget studies.